



SEHRFAB
USA

9-GAUGE, HDPE KNITTED SHADE FABRIC

Awnings, Car park, Shading structures & Tensile structures.





Colors

Ivory	Coffee
Sand	Red
Yellow	Rusty Terra
Pine Needle	Silver
Aqua	Charcoal Grey
Ocean Blue	Black
Hunter Green	

- SEHRFAB USA is a high-quality, UV-stabilized HDPE knitted fabric designed for tension structures and shade sails.
- Offers the ultimate combination of maximum sun protection, strength, and durability.
- Features a knitted lock-stitch pattern that does not fray or rot.
- Comes with a 12-year UV degradation warranty.
- 100% recyclable, 100% lead- and phthalate-free.
- Stentered (heat-set) for dimensional stability and suitability for tensile installations.
- Provides a UV block range up to 98%, protecting against sun exposure and increasing comfort in outdoor surroundings.

FABRIC PROPERTIES

Normal fabric mass (gsm) (AS 2001.2.13) 340 +/- 20 gsm
Approximate thickness (mm) 1.36 mm

ROLL SPECIFICATIONS

Roll width (m) 3.1 m
Roll Length (m) 32 meters
Approx. roll weight 33.7 kg
Approx. roll diameter (Packing) 25 cm
Core diameter 51 mm

PERFORMANCE

Yarn	Knitted UV-stabilized HDPE
Construction	Monofilament & tape
Pattern	9 Gauge Lock-stitch knitted
Temperature range (°C)	-30 to +70
Tensile strength - Warp ASTM D5034	328.6 lbf / 1461 N
Elongation at break - Warp (%)	93.60%
Tensile strength - Weft ASTM D5034	292.6 lbf / 1301N
Elongation at break - Weft (%)	87.40%
Tear Strength Tongue Tear - Warp (ASTMD2261)	47.2 lbf / 210 N
Tear Strength Tongue Tear - Weft (ASTMD2261)	41.1 lbf / 182 N
Burst force lbf (ASTM D6797)	458.4 lbf / 2040 N

FLAMMABILITY

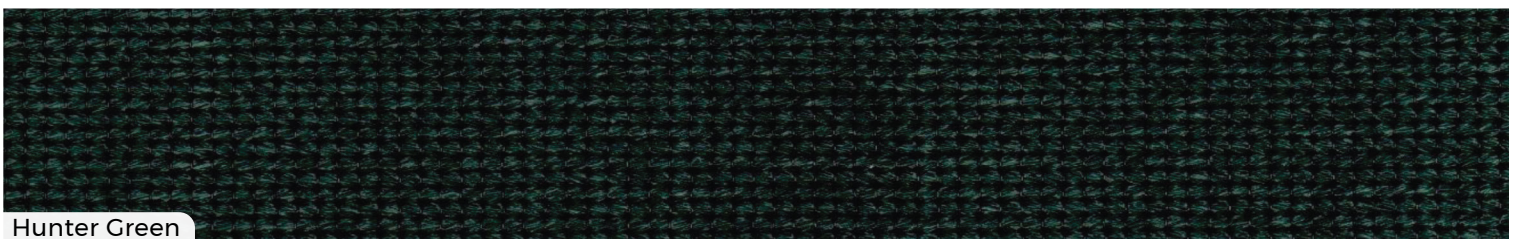
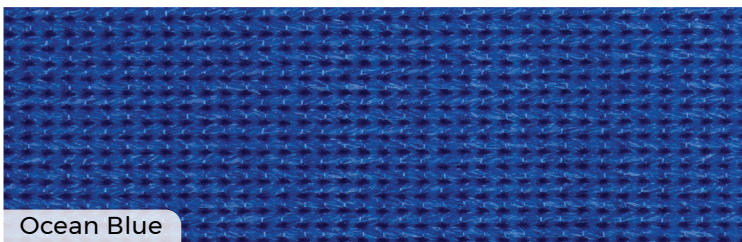
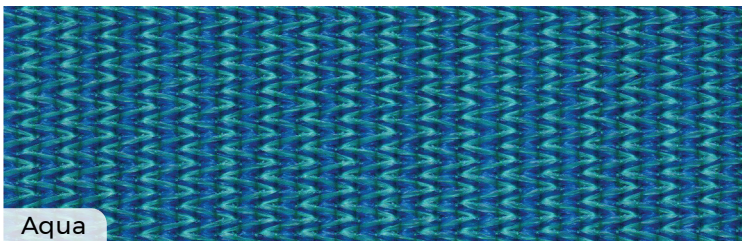
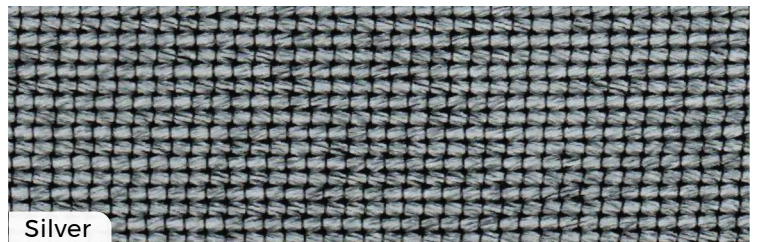
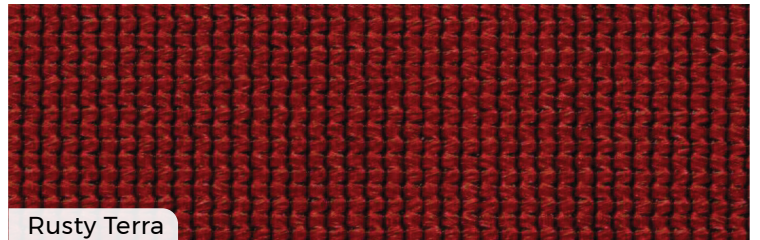
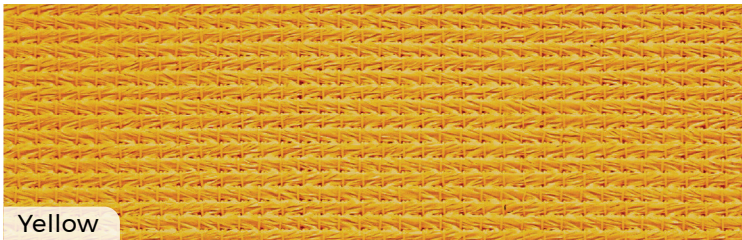
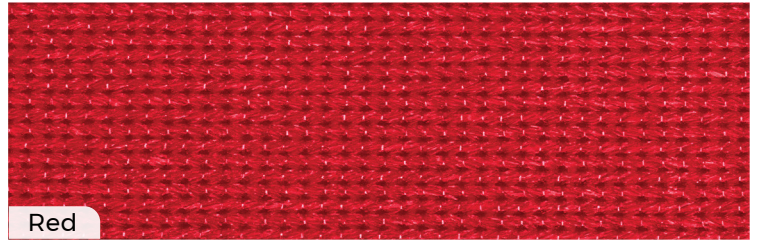
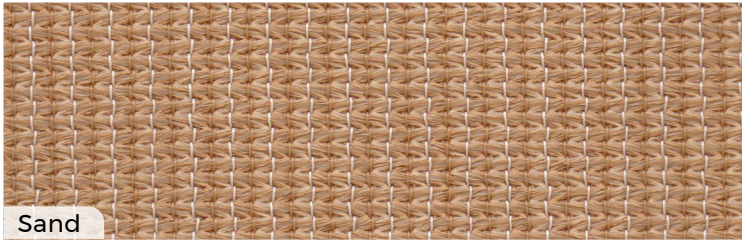
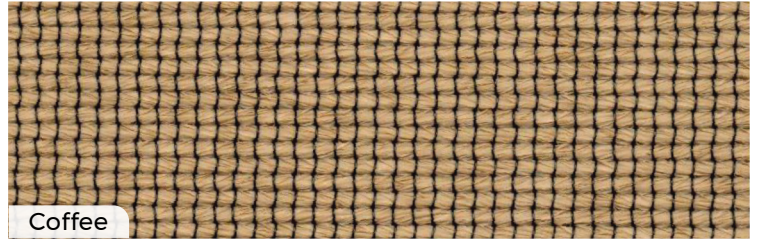
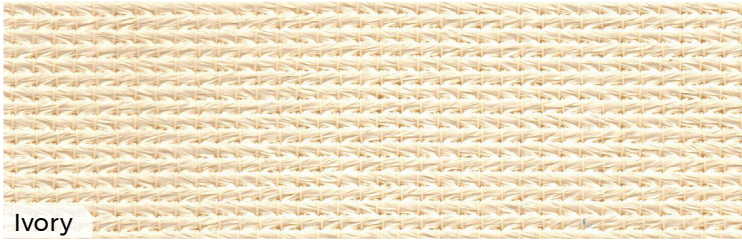
Certificates are available upon request

ASTM E84

NFPA 701 Test Method 2

California Fire Marshall Title 19

Details	Shade Fabric Results							Human Protection	
Color Name	Cover Factor	Shade Factor	UV-Vis Trans %	UVR Trans %	UVR Block %	PAR Trans %	Designation	UVE %	Protection Category
Ivory	96.0	78.2	21.8	4.1	95.9	25.2	Ultra -heavy Cover	95.0	Most Effective
Coffee	93.0	87.1	12.9	6.5	93.5	13.7	Extra -heavy Cover	92.0	Very Effective
Sand	96.0	86.8	13.2	3.6	96.4	14.1	Ultra -heavy Cover	96.0	Most Effective
Red	92.0	80.1	19.9	7.0	93.0	17.7	Extra -heavy Cover	95.0	Most Effective
Yellow	95.0	79.7	20.3	3.9	96.1	21.7	Ultra -heavy Cover	95.0	Most Effective
Rusty Terra	96.0	95.1	4.9	3.2	96.8	4.5	Ultra -heavy Cover	96.0	Most Effective
Pine Needle	93.0	84.3	15.7	6.5	93.5	17.0	Extra -heavy Cover	93.0	Very Effective
Silver	95.0	95.0	5.0	4.9	95.1	5.0	Ultra -heavy Cover	94.0	Very Effective
Aqua	93.0	86.0	14.0	7.4	92.6	16.9	Extra -heavy Cover	92.0	Very Effective
Charcoal Grey	94.0	92.8	7.2	5.6	94.4	7.3	Ultra -heavy Cover	94.0	Very Effective
Ocean Blue	97.0	92.7	7.3	2.9	97.1	9.6	Ultra -heavy Cover	96.0	Most Effective
Black	97.0	97.7	2.3	2.1	97.9	2.3	Ultra -heavy Cover	97.0	Most Effective
Hunter Green	96.0	94.5	5.5	3.2	96.8	6.2	Ultra -heavy Cover	96.0	Most Effective





SEHRFAB

USA



KNITTING
EXCELLENCE
WITH
INNOVATION



<https://sehrfabusa.com/>

